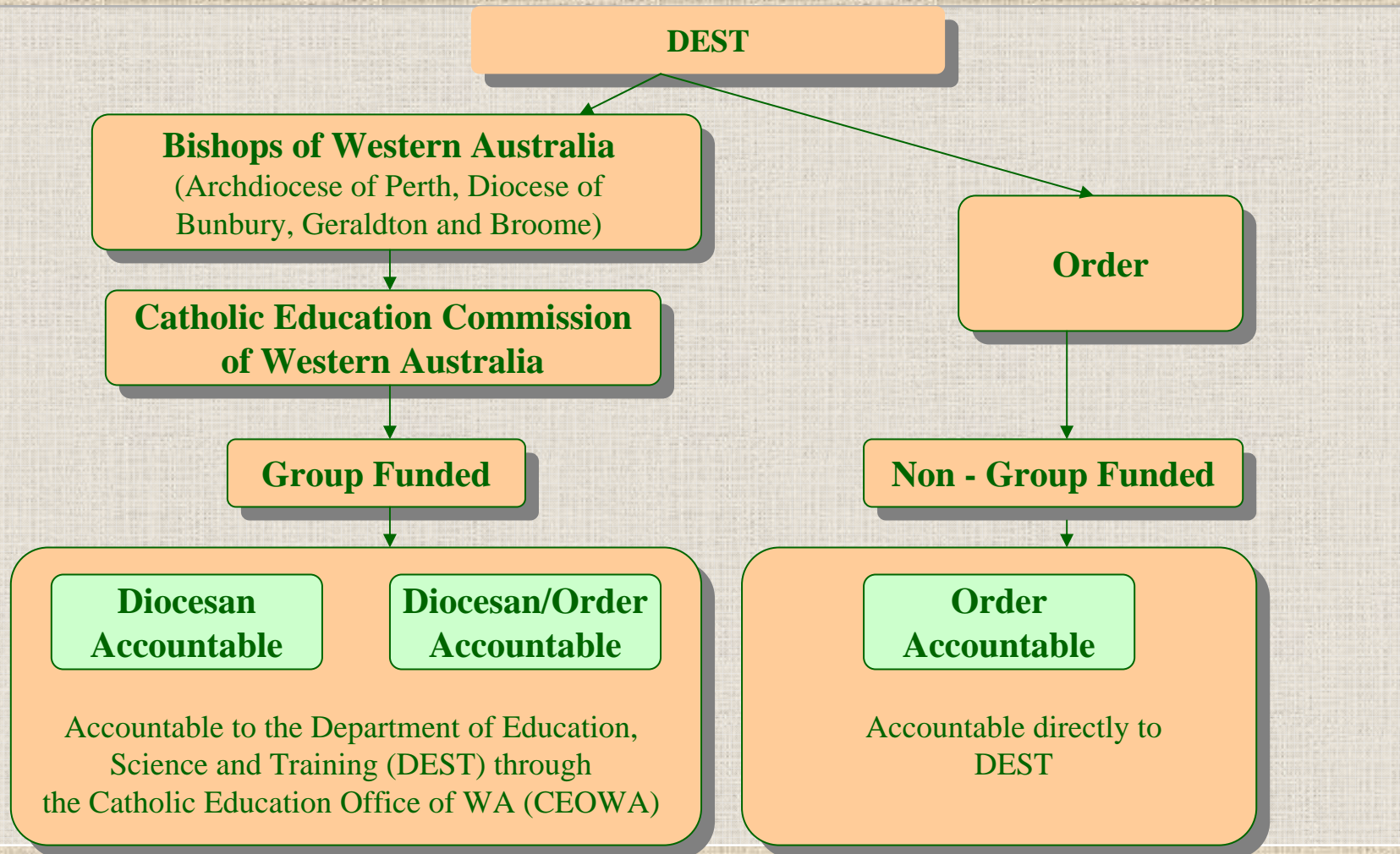


# **Money, Money, Money: Primary School Finances**

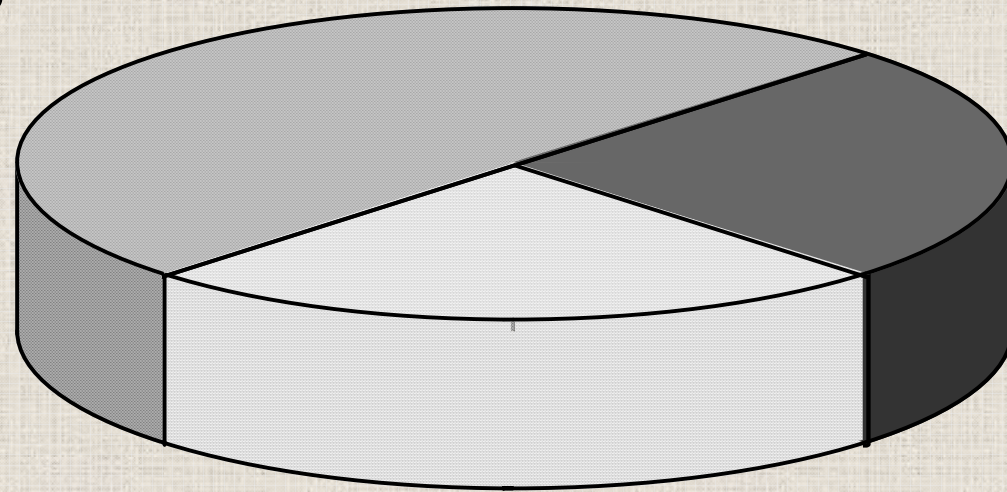
**March 2008**

# Financial Accountability



# Sources of Recurrent Income

**Commonwealth**  
**50%**



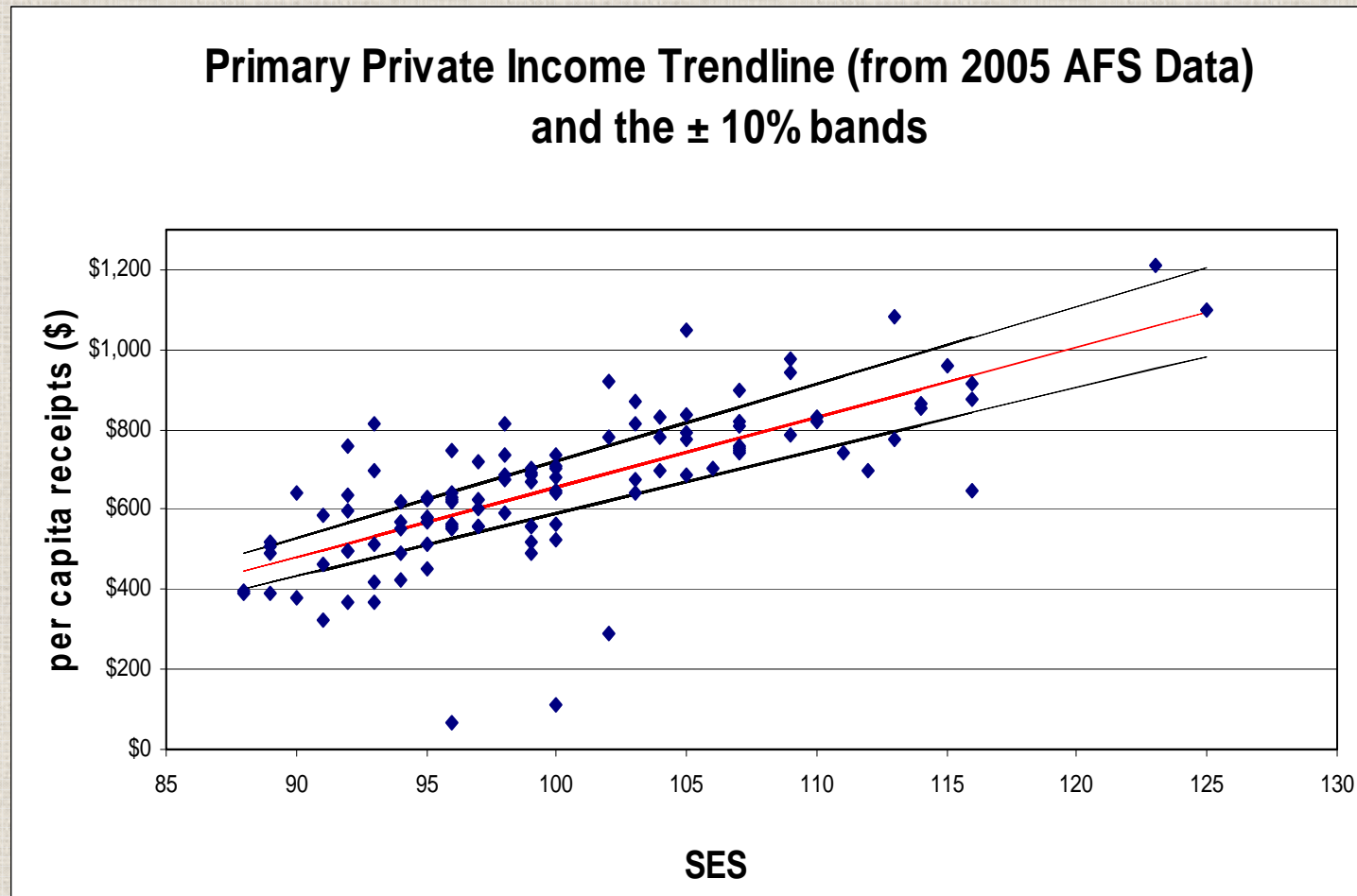
**Private**  
**25%**

**State**  
**25%**

# Private Income

- Fees and Charges
- Bank interest
- Donations (P & F, Parish)
- Rent

# Primary Private Income Trendline





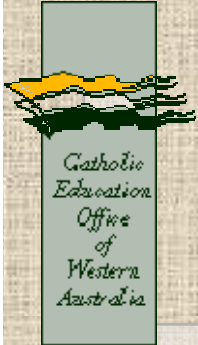
# Fees & SES – National context

- WA Catholic Ed has the highest SES compared to other States with the exception of the ACT
- WA Catholic Ed has a higher SES than the Government System
- In all other States the Government System has a higher SES
- WA Catholic Primary fees are lowest in Australia
- WA Catholic Secondary fees are at the National average
- WA has the greater cross subsidisation to low SES schools

# Fees

- Each year the CECWA determines the maximum percentage increase in fees for each school
- Guidelines for schools wishing to exceed the maximum percentage fee increase:

Diocesan accountable schools	Order accountable group funded schools	Order accountable non-group funded schools
Approval of Director of Catholic Education	Consultation with Director of Catholic Education and obtain approval of the Congregational Leader	Obtain the approval of the Congregational Leader and inform Director of Catholic Education.



# Fees – determining the CECWA recommended increase range

Example of an “average” school

- Expenditure increase = 6%
- GRG indexation = 6%
- State indexation = 6%
  
- Fee increase of 6%



# Fees – determining the CECWA recommended increase range

Example of an “average” school

- Expenditure increase = 6%
- GRG indexation = 5%
- State indexation = 4%

$$6\% = \frac{1}{2} \text{ of } (5\%) + \frac{1}{4} \text{ of } (4\%) + \frac{1}{4} \text{ of } (F\%)$$

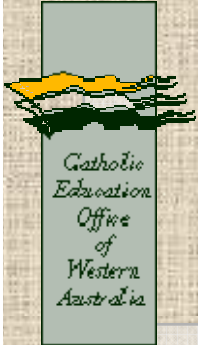
$$6\% = 2.5\% + 1\% + 2.5\%$$

Fee increase (F) therefore = 10%

- Calculated for each school’s individual mix of AG, State & PI

# State Government Grants - Per Capita Grants

- Per Capita Grants
  - Kindergarten to Year 12 (not FFPOS)
  - 9 funding categories (A – I)
  - System funded at level F (I for Remote Schools)
  - Paid in 4 instalments: Feb, May, August, Sept.



# State Government Grants - Other

- Students with Disabilities
- Curriculum Framework
- Retention & Participation (Secondary)



# Australian Government Grants - General Recurrent Grant

- Loading for Rural and Remote schools from 2008
- PP – year 12
- Percentage of AGSRC
- Catholic System currently at the higher of 56.2% or individual SES level
- GRG allocated on a needs basis
- Paid in 3 instalments
  - 50% in February
  - 25% in July
  - 25% in October



# Australian Government Grants - GRG Allocation Principles

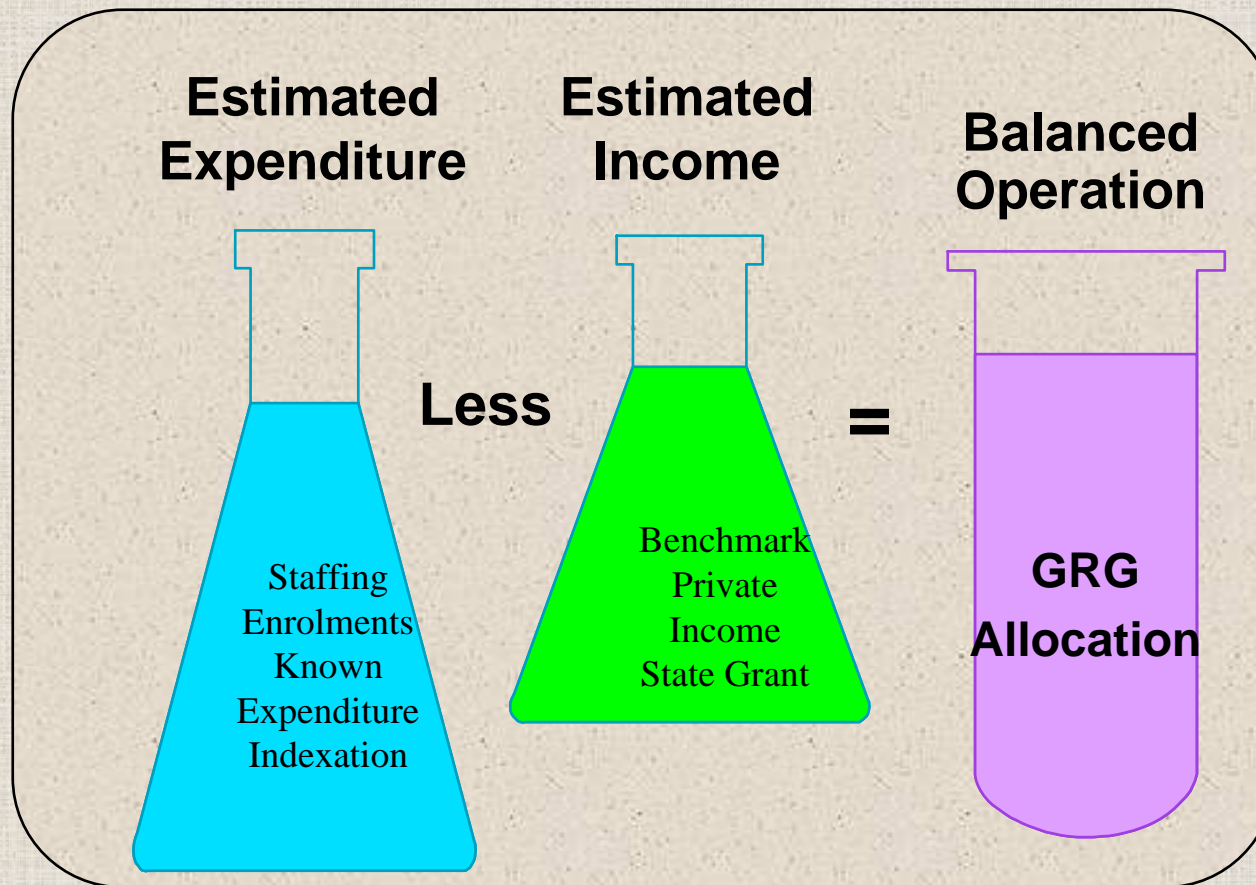
- All students in Catholic schools should have access to a minimum base of educational resources regardless of SES or the school they attend
- Recurrent grants should be distributed in such a way that those in need in the community receive proportionately more funding
- The amount of privately generated income that is expected to be contributed by a school, should reflect the SES of the school community.



# Distribution of Australian Government General Recurrent Grant

See separate sheet

# Primary and Co-responsibility GRG Allocation





# Primary School GRG Calculation

See separate sheet

# Australian Government Grants - Other

- Targeted Programs
  - LNSLN (Literacy & Numeracy, Special Education)
  - Languages other than English
  - Country Areas Programme
  - ESL – New Arrivals & Indigenous
- AGQTP
- IEP
- Vocational Education & Training (Secondary)

# Primary school budget issues

- RAISe
- Fees (lowest in Australia)
- Increased DOTT
- AP Deed of Agreement
- School cars
- EBA
- Principal's Deed



# Primary school budget issues

- Three year old programs
- Extended kindergarten
- Fees
- Relocation of year 7s
- 2009-2013 Quadrennium